

BrachyNext



Working Together to Shape the Future of
Brachytherapy

BrachyNext



Working Together to Shape the Future of
Brachytherapy

Quality of Life and Brachytherapy: When and When Not to Treat?

Tim R. Williams, MD
Medical Director – Radiation Oncology
The Lynn Cancer Institute
Boca Raton Regional Hospital

Advantages to Palliative Brachytherapy

- Outpatient treatment
- Generally rapid response
- Relatively safe
- Highly localized treatment
- Cost effective (particularly when compared with palliative chemotherapy)



Patient Selection: Lung

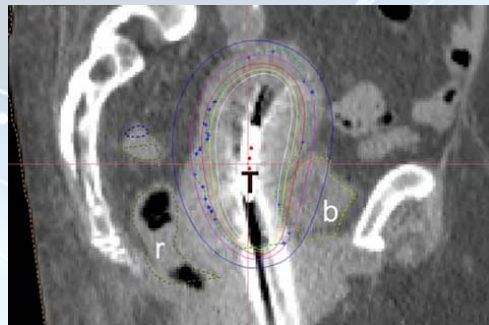
- Significant cough, dysphagia, hemoptysis
- Confirmed Intraluminal disease
- Reasonable Performance Status and Life Expectancy





Patient Selection: Cervix/Uterus

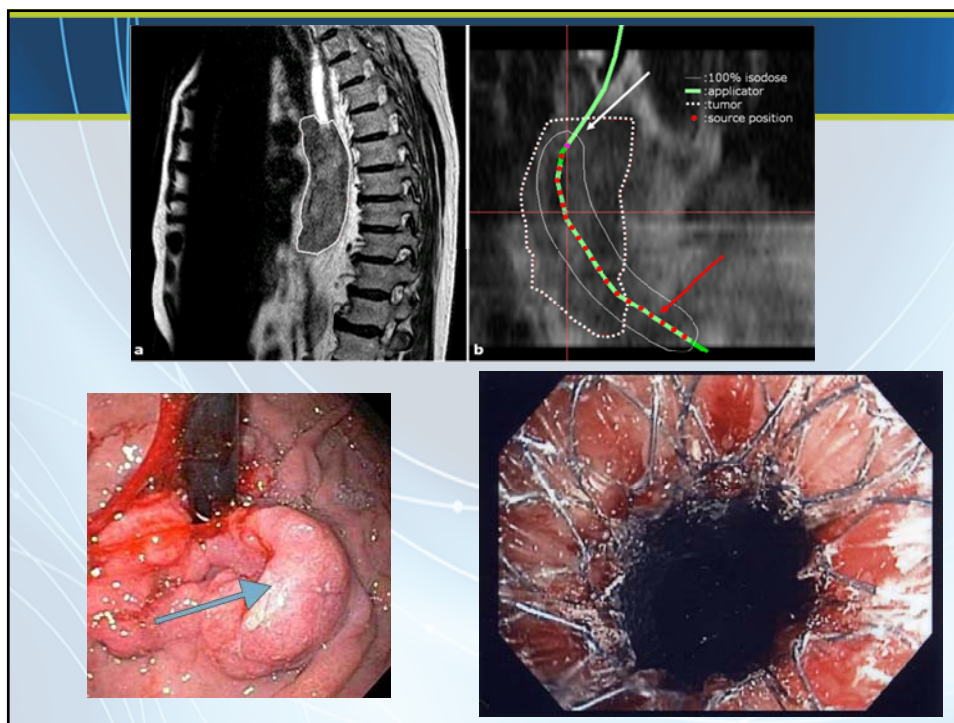
- Visible os
- Symptomatic bleeding
- Reasonable life expectancy





Patient Selection: Esophagus

- Confined to esophageal wall
- Less than 10 cm length
- No significant gastric extension
- Absence of multiple skip lesions
- No significant lymphadenopathy
- Cervical location
- Absolute contraindications:
 - TE fistula
 - Non-bypassable stenosis





Number One Symptom:



http://www.smcm.edu/rivergazette/_assets/images/PainArtNew-Image2.jpg



<https://scholarblogs.emory.edu/visualrealities/?p=660>



Pain Algorithm

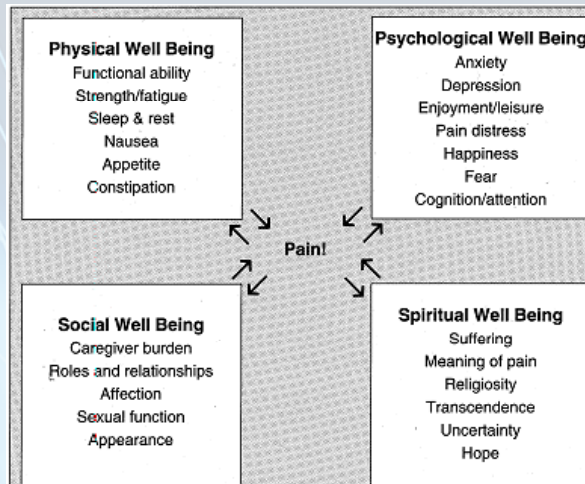
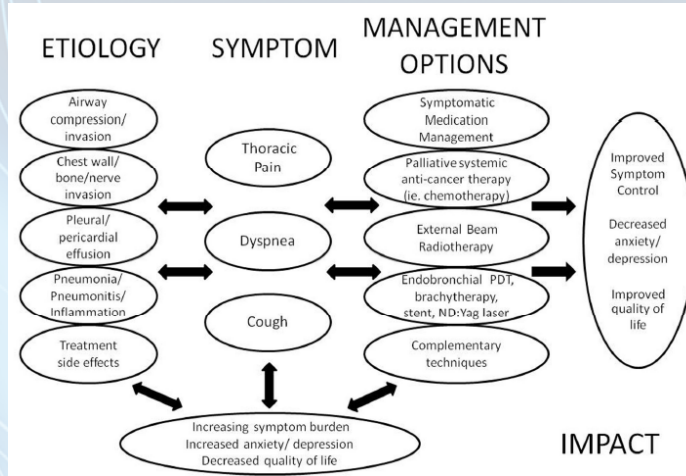


Figure 1: The Quality of Life model shows how pain impacts quality of life by affecting a patient's physical, psychological, social, and spiritual well being.

BrachyNext



Working Together to Shape the Future of
Brachytherapy

